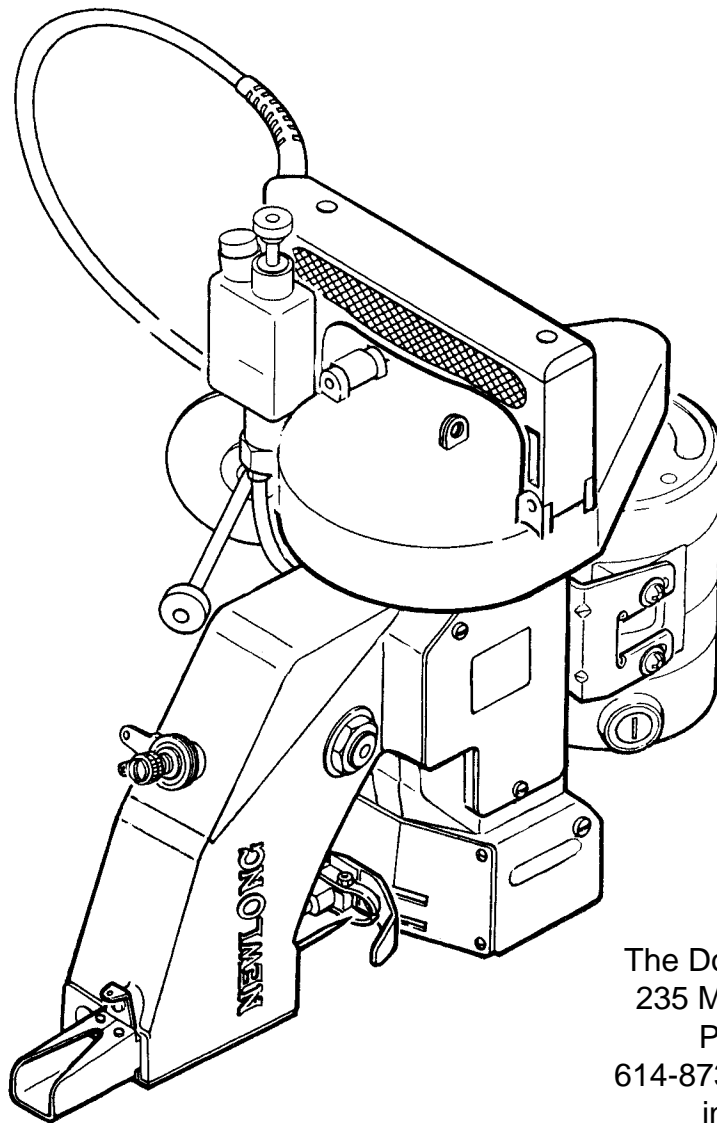


# NEWLONG

MODEL **NP-7A**  
(NP-7H)

PORTABLE FILLED BAG CLOSING MACHINE

INSTRUCTION MANUAL/PARTS LIST



The Don Marshall Company, Inc.  
235 Maple Street - PO Box 124  
Plain City, Ohio 43064  
614-873-8520, Fax: 614-873-8338  
info@donmarshall.net

**NL** ニューロング株式会社  
NEWLONG MACHINE WORKS, LTD.

**No.35**

# 1. SPECIFICATIONS

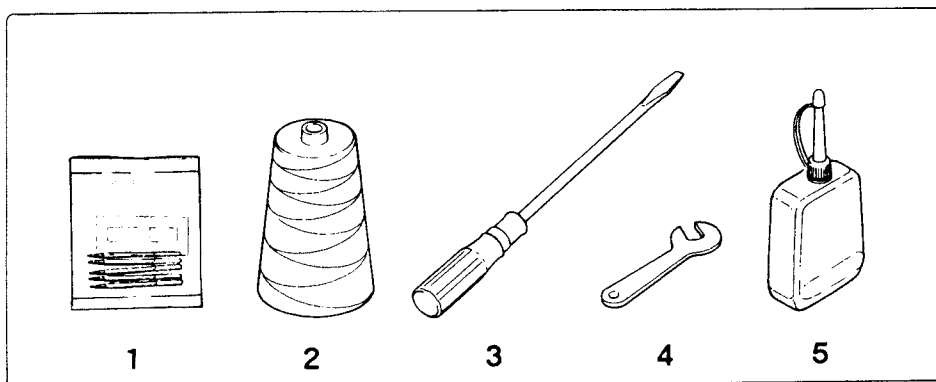
- This Bag Closing Machine is designed for use in the light industries.

## TECHNICAL DETAILS

Speed(sec/bag)	5 - 6
Seam	Single Thread Chain Stitch
Stitch Range(mm.)	8.5 (fixed)
Revolution(rpm.)	1700~1900
Needle	DN×1 #25
Thread(vinylon,synthetic or cotton)	20/6
Bag Material To Be Closed	Kraft Paper, PP/PE Woven Cloth, Cotton, Hessian, Jute
Drive Motor	110V~120V(90W),200V(90W),230V~240V(90W)
Power Supply	110~120,220 or 230~240V, A.C. 12V,24V.,D.C.(specify one.) 50 - 60Hz,Single Phase
Net Weight(kg)	6 kgs Including Thread Cone.
Machine Dimension(mm.)	361(L)×246(W)×321(H)
Packing Dimension(cft.)	2.5

## ■ STANDARD ACCESSORIES

1. Needles DN×1 #25 ..... 5 pcs.
2. Thread Vinylon 20/6 ..... 1 roll
3. Screw Driver ..... 1 pce.
4. Needle Bar Spanner ..... 1 pce.
5. Oil ..... 1 can



# 2. THE POINTS BEFORE OPERATION

- Oil the area through which thread passes, the tension disc, the thread guide, looper, etc.  
(Note:An anticorrosive agent is applied to the machines at the factory, in order to prevent rusting. It is necessary to use oil to remove this agent. or it may prevent the thread from passing smoothly.)
- Confirm that the machine has been threaded as per Fig.5 in the manual.
- Confirm that the machine has been lubricated as per Fig.1 in the manual.

# CONTENS

---

<b>1. SPECIFICATIONS</b>	<b>2</b>
<b>2. THE POINTS BEFORE OPERATION</b>	<b>2</b>
<b>3. PREPARATION FOR START</b>	<b>3</b>
1. Oiling	3
2. Needle Setting	3
3. Threading	3
<b>4. START</b>	<b>4</b>
<b>5. ADJUSTMENTS</b>	<b>5</b>
1. Thread Tension	5
2. Position of Needle and Looper	5
3. Position of Feed Dog	5
4. Pressure of Presser Foot	5
5. Presser Foot Lifter	5
6. How to use Hook	5
<b>6. REPLACING PARTS</b>	<b>6</b>
<b>7. LUBRICATOR</b>	<b>7</b>
1. Operation	7
2. Maintenance	7
3. Troubleshooting	7
<b>8. MAINTENANCE</b>	<b>8</b>
<b>9. ORDERING PARTS</b>	<b>9</b>
<b>NUMERICAL INDEX OF PARTS</b>	<b>26,27</b>
<b>DIAGRAM OF SCREW, NUT &amp; WASHER</b>	<b>28</b>

---

## 3. PREPARATION FOR START

### 1. Oiling (Fig.1)

Oiling is imperative to keep the machine in good operating condition. Pour oil in the reservoir (capacity 45 cc). To begin the flow of oil to the machine, push the button of the lubricator ten times continuously before starting the machine. This should dispense enough oil for an average running of four hours under normal operating conditions. Do not run the machine without oil as it could cause a machine failure or break down.

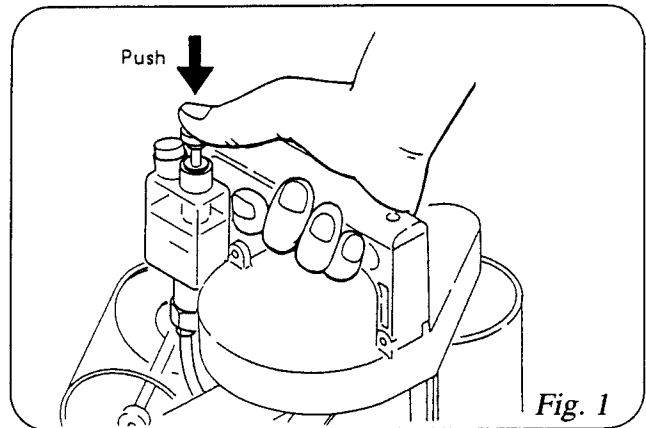


Fig. 1

### 2. Needle Setting (Fig.2, 3, 4)

Turn the pulley until Needle Bar reaches its highest position. Loosen Needle Bar Clamping Nut, and set Needle in the Bar as deep as it will go.

Be sure to set a Needle with its concave part facing correctly toward the Loper. Fix Clamping Nut tightly, otherwise Needle may come loose during operation and break.

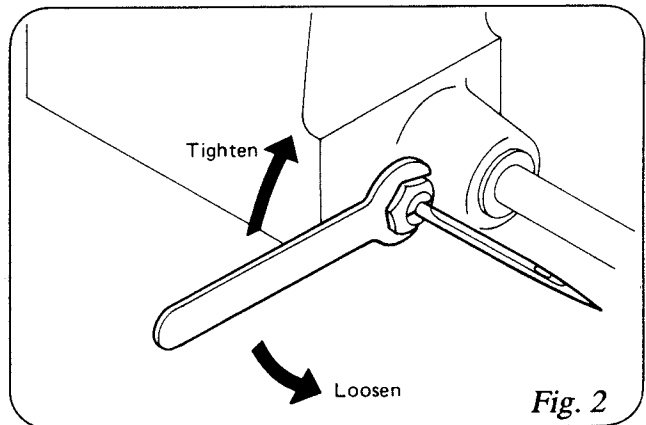


Fig. 2

### 3. Threading (Fig.5)

The machine is delivered being threaded to show you proper threading of the machine, which is shown in Fig.5, for identification. Follow the guide numbers 1 to 7 of Fig.5.

- ①,② Thread Eyelet
- ③ Tension Disc
- ④ Thread Eyelet
- ⑤ Needle Bar
- ⑥ Thread Eyelet
- ⑦ Needle

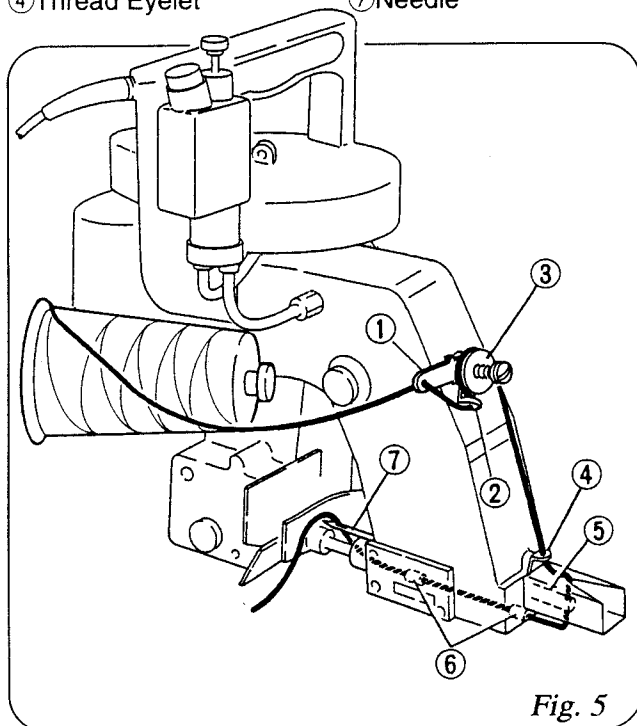


Fig. 5

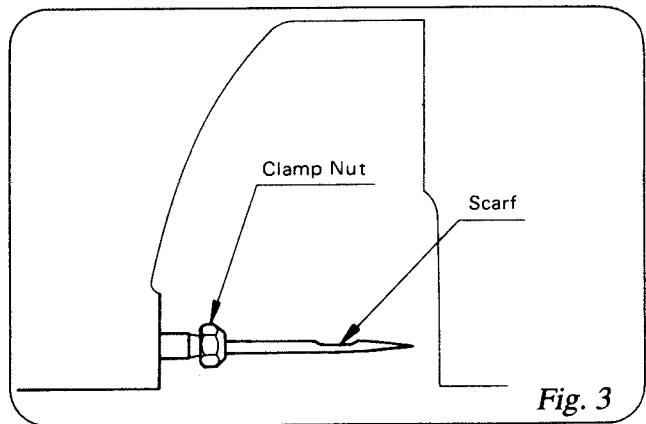


Fig. 3

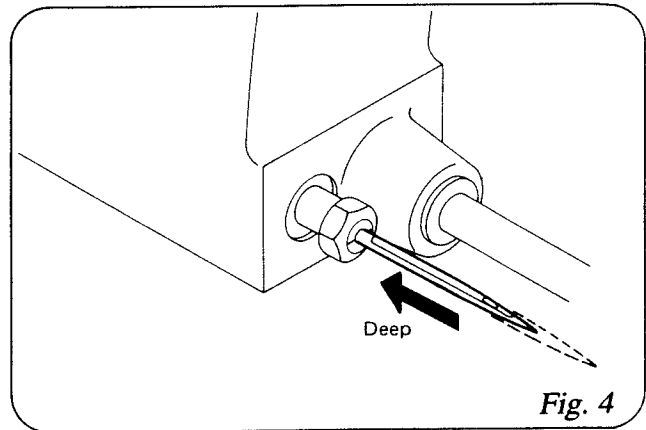


Fig. 4

## 4. START

Before starting, make sure that the supply voltage accords with the specification of the motor.

Hold the machine in your right hand and place your index finger on the switch button on the handle.(Fig.6)

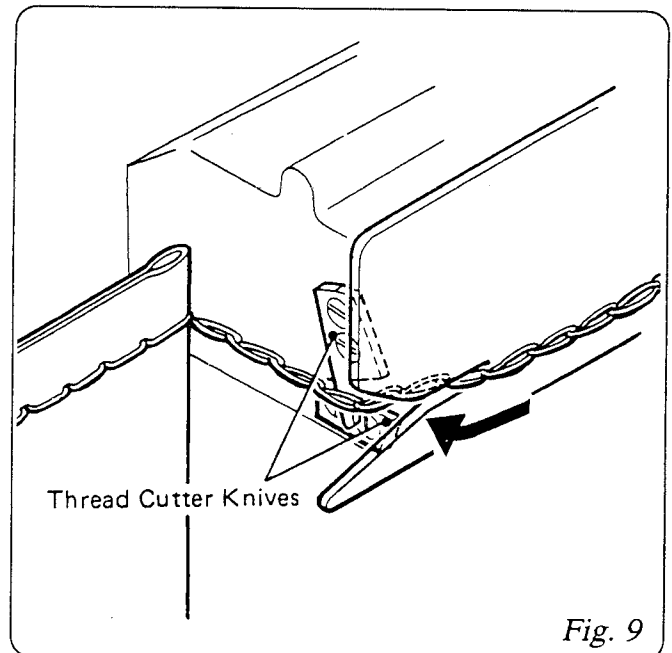
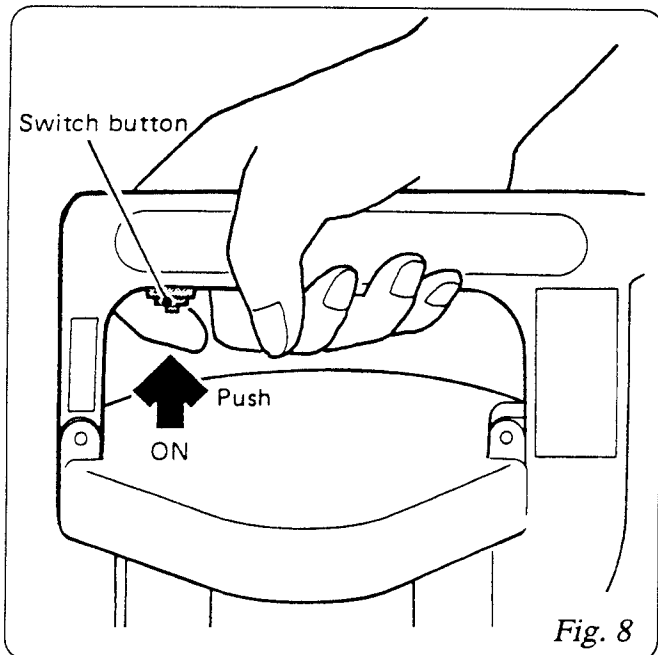
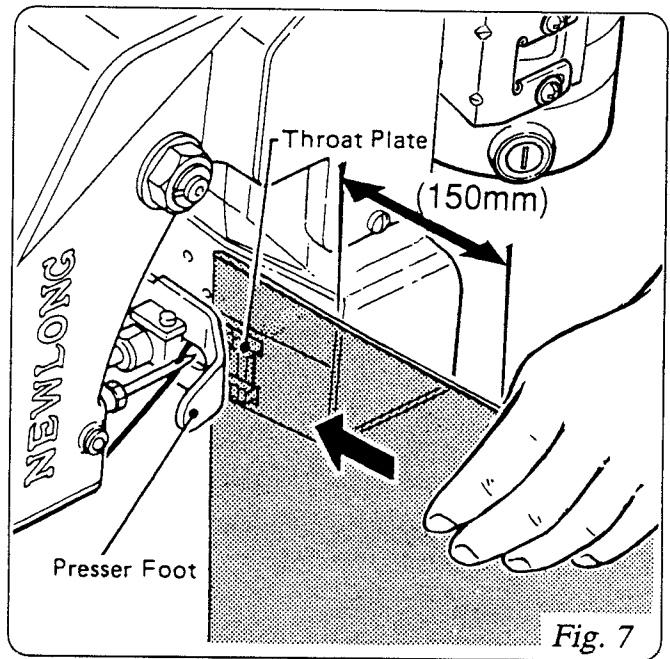
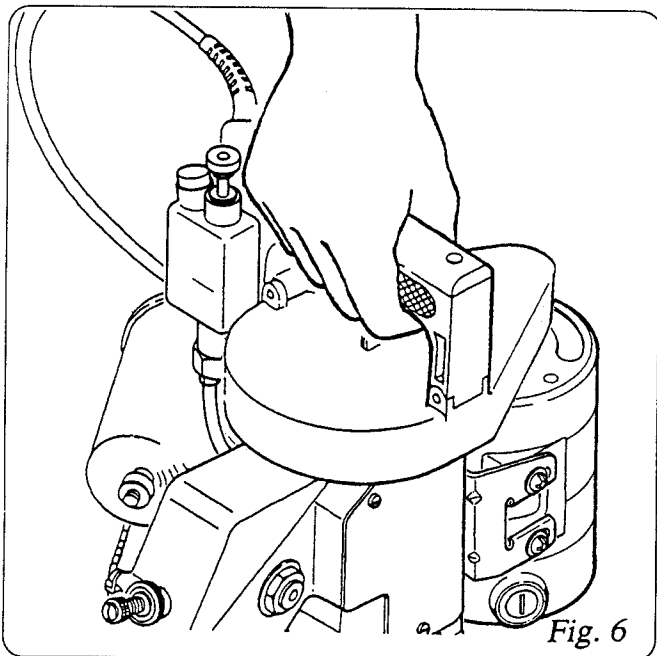
Hold the bag in your left lightly and insert the bag mouth between Feed Dog and Presser Foot.(Fig.7)

Run the machine while keeping the bag straight.

Never pull or pull back the bag.

After closing, the thread is cut by the built-in nibbler type cutter.

When cutting the thread, leave at least 3 cm long extended tail to prevent the unwilling loosening of the seam.(Fig.9)



Run the machine with empty bags and make sure you are well versed in its operation before entering into actual operation.

## 5. ADJUSTMENTS

### Important !

When adjusting the machine or replacing parts, always disconnect the Electric Cord from the power source.

This is important in view of safety to the operator and adjuster.

#### 1. Thread Tension (Fig.10)

The thread tension spring is preset at the factory to sew PP woven cloth bags. If some adjustment is needed, first loosen screw (A) (9/64S40054) and adjust the thread tension nut (B) (245092) as per Fig.10. When the adjustment is finished, retighten screw to lock the thread tension nut.

If this is not done, the stitch will not remain uniform.

#### 2. Position of Needle and Loper (Fig.11)

Looper must pass the concave part of Needle with clearance of 0.1 mm as shown in Fig.11. Adjustment of the clearance can be done after loosening the screw of Loper Rocker.

#### 3. Position of Feed Dog (Fig.12)

When installing a new feed dog ensure that it is positioned correctly onto the feed dog carrier block and lightly tighten the fixing screw. Check that the feed dog teeth are 2.8mm above the throat plate when the feed dog is in the highest position before final tightening of the fixing screw.

#### 4. Pressure of Presser Foot

When to adjust the pressure of Presser Foot, take out Needle Bar Guard and loosen Screw of Presser Bar Connection. Move up Presser Bar to increase the pressure and down to decrease. After the adjustment, tighten the Screw firmly.

#### 5. Pressure Foot Lifter

The Presser Foot Lifter is used to lift the Presser Foot and pull out a bag from under the Presser Foot in case of a problem such as bag or thread jamming.

#### 6. How to use Hook (Part No.241151)

The Hook on the Pulley Cover is used to install a Shoulder Belt or a Hanger.

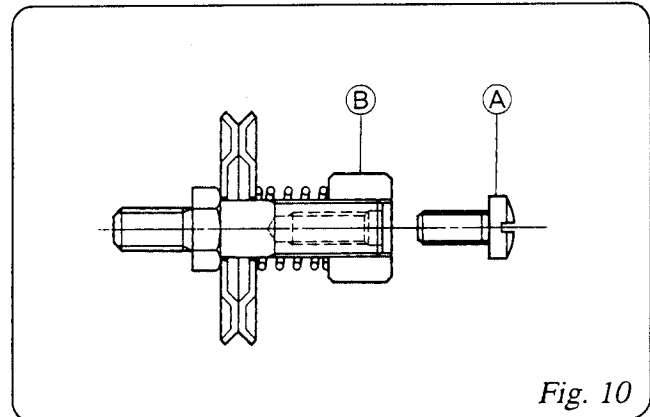


Fig. 10

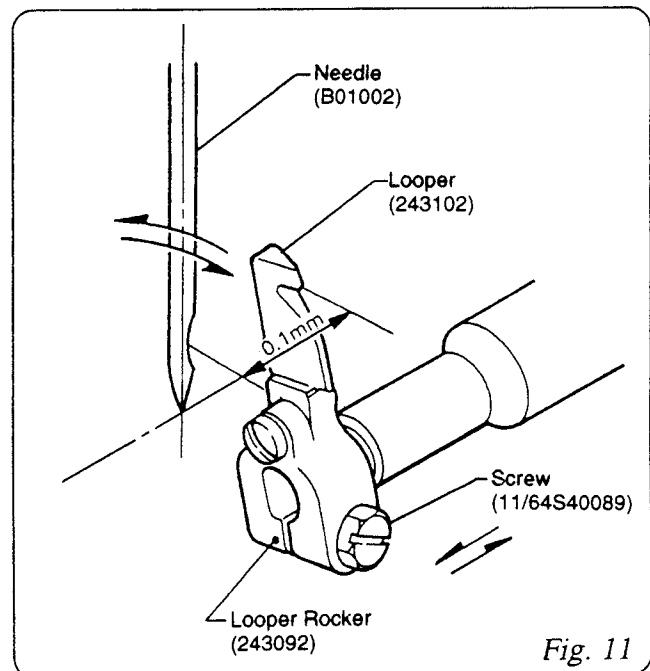


Fig. 11

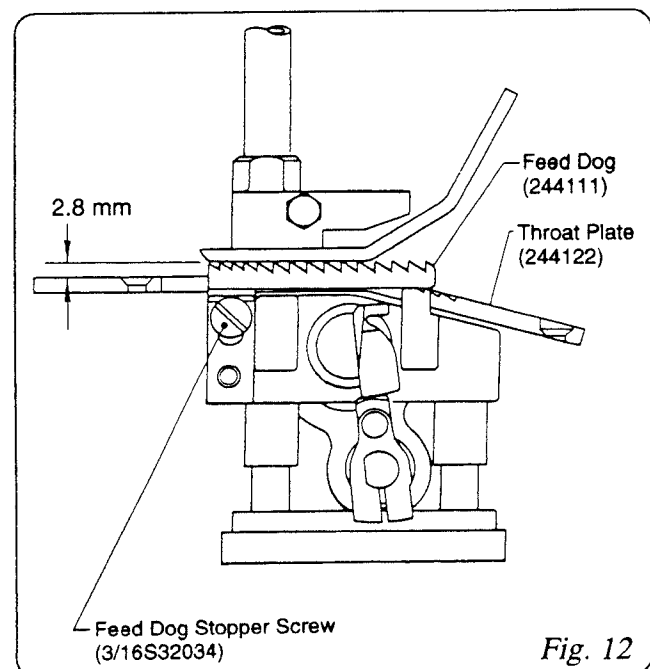


Fig. 12

## 6. REPLACING PARTS

For replacement or adjustment of Ball Rod, refer to Fig.13.

Take out Screw ① and disconnect Rod End ② from Needle Bar Lever ③. After loosening the Nut ④, adjust the clearance between Connecting Rod ⑤ and Rod End ②, so that Needle Bar moves in the center of the clearance between the upper and lower Presser Bar Bushings. (Needle Bar stroke is 37 mm).

To fix Eccentric Cam ⑦ on Main Shaft ⑧, tighten the Screws ⑨ and ⑨ on Main Shaft ⑧ (Eccentric Cam ⑦ should contact Spacer ⑩ slightly.). The position of Needle is adjusted so that the distance between the point of Needle (at its highest position) and Throat Plate is 13 mm, after loosening screw on Needle Bar Connection Assembly ⑥ in Fig.13.

- ① Screw 11/64S40084
- ② Rod End 6A04001
- ③ Needle Bar Lever 242051A
- ④ Nut 1N8
- ⑤ Connecting Rod Assembly 242011A
- ⑥ Needle Bar Connection Assembly 242101A
- ⑦ Eccentric Cam (part of Connecting Rod Assembly) 242011
- ⑧ Main Shaft 241102
- ⑨ ⑨ Screw 11/64S40001
- ⑩ Spacer 241161

Adjust Looper Drive Cam ③ When necessary as follows: (Refer to Fig.14.).

- a) Apply the Screws ② and ② on the taper of Main Shaft ①.
- b) Adjust Arm (B) ④, so that Looper Drive Cam ③ and Arm (A) ⑤ move smoothly. After adjusting, fix the Screw ⑥ tightly.
- c) The clearance between Looper Drive Cam ③ and Arm ⑤ is effected by Spring ⑦. Loosen Screw ⑨ and turn Spring Supporter ⑧ to adjust the pressure of Spring ⑦. After adjusting, tighten the Screw ⑨ to fasten Spring Supporter ⑧.

- ① Main Shaft 241102
- ② ② Screw 15/64S28524
- ③ Looper Drive Cam 243012
- ④ Looper Rocker Shaft Arm (B) 243081
- ⑤ Looper Rocker Shaft Arm (A) 243071
- ⑥ Screw for Looper Rocker Shaft Arm (B) 11/64S40009
- ⑦ Spring 243131
- ⑧ Spring Supporter 243121
- ⑨ Screw for Spring Supporter Block 11/64S40003

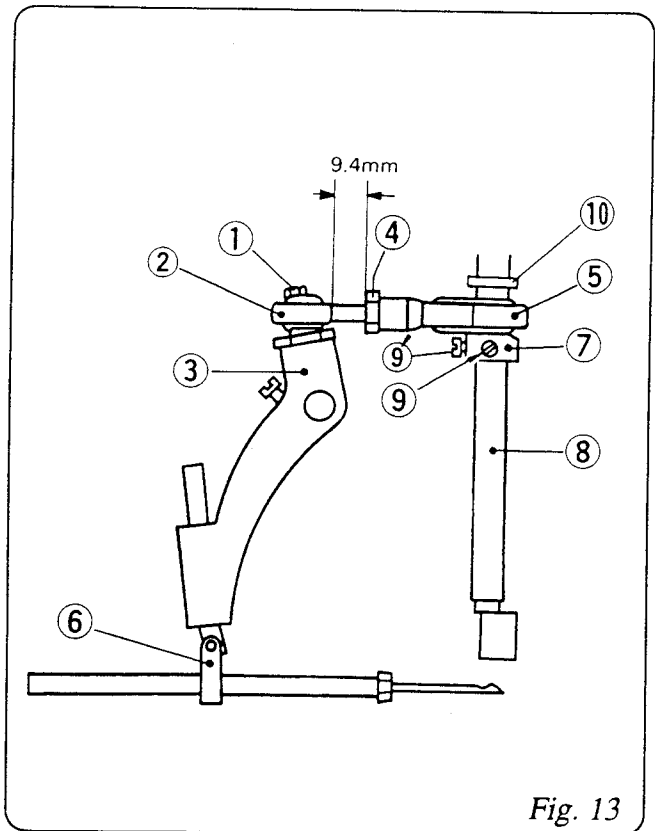


Fig. 13

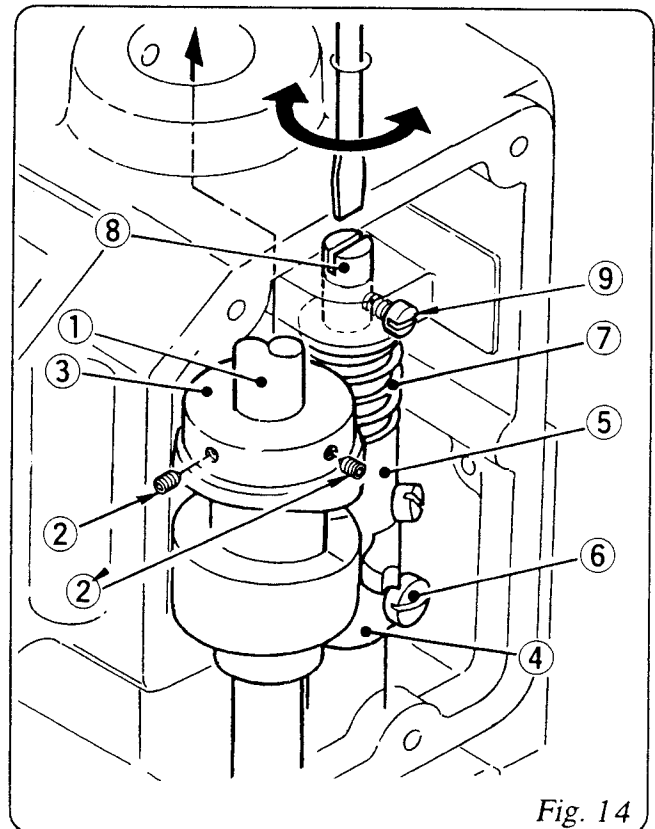


Fig. 14

# 7. LUBRICATOR

## 1. Operation

The lubricator comprises a pump and a reservoir. The reservoir holds max 45 cc of oil. (Effective oil volume is 28 cc.)

Use mineral oil 22 - 32 cSt at 40°C (Eg. Tellus oil #32).

To operate the lubricator:

1. First unscrew the reservoir cap by half a turn.\*
2. Push the button to its lowest position (stroke: 12mm).
3. When released, the button will automatically return to its original position.
4. Lastly, tighten the cap to prevent oil leak during operation.

\* Repeated working on the button without first loosening the cap may produce negative pressure in the reservoir, and the dust in the atmosphere may be easily introduced in it when the cap is loosened.

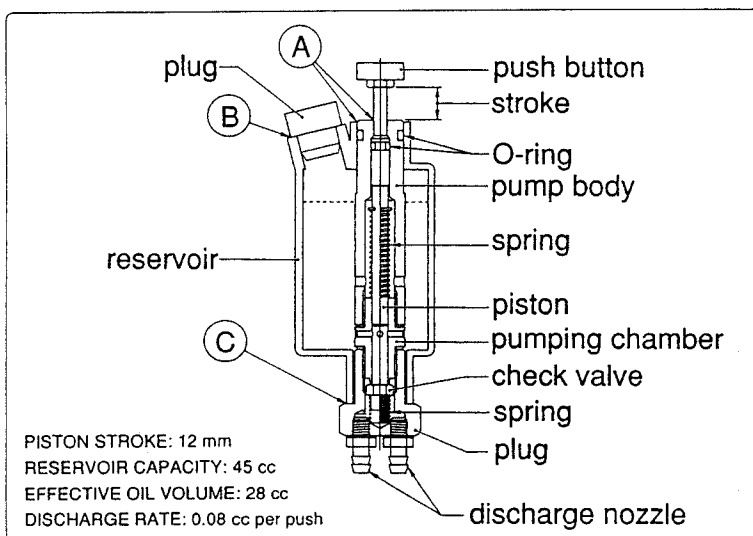
## 2. Maintenance

1. Keep off dust or foreign matter when to fill oil (They may cause jamming of the piston and the check valve).
2. Rate of discharge is fixed and not adjustable (0.08cc per push).
3. At high temperatures, grease may run along points (A). This is normal, grease being used when the lubricator was assembled in our plant.
4. Reservoir is made of high density polyethylene. Keep off fire and refrain from using organic, benzene, or xylene chemicals for cleaning. Check periodically for correct working of the pump. (Repeat oil feed and look at the oil through the discharge pipe.)

## 3. Troubleshooting

Trouble	Cause	Remedy
Oil not fed.	Low oil level.	Fill oil.
Full stroke movement not obtainable.	Dust attached on the interior wall of the pumping chamber.	Replace lubricator.
Button will not return.	Dust accumulated, or break of spring.	Replace lubricator.
Oil leak from (A)	Wornout or displaced seal of O-Ring.	Replace lubricator.
Oil leak from (B)	Wornout or displaced seal of packing.	Replace lubricator.
Oil leak from (C)	Loose plug.	Tighten plug or Replace lubricator.

PUSH-BUTTON LUBRICATOR Model: NP-7A





## 8. MAINTENANCE

Clean the machine at the end of the day's work, and oil the bushings, shaft, etc. that are not lubricated by a lubricator. Wipe dust and other foreign matter off the Feed Dog teeth Looper and Throat Plate eyelet where they are easily gathered.

Care should be taken to keep the machine free from dust, especially when to leave it unused for some time.

### **Important !**

The motor body should not be opened for the maintenance.

When adjusting the machine or replacing parts, always disconnect the Electric Cord from the power source.

This is important in view of safety to the operator and adjuster.

### **[NOTES ON CARRYING AND STORAGE]**

1. Carry the machine in a storage box.
2. After the use of the machine, remove the plug, clean the dirt, take the thread from the machine and then put it into a storage box.  
We suggest you to use a soft brush to clean the rear of the machine.
3. Never store the machine under the sunlight dried or wet condition.

## 9. ORDERING PARTS

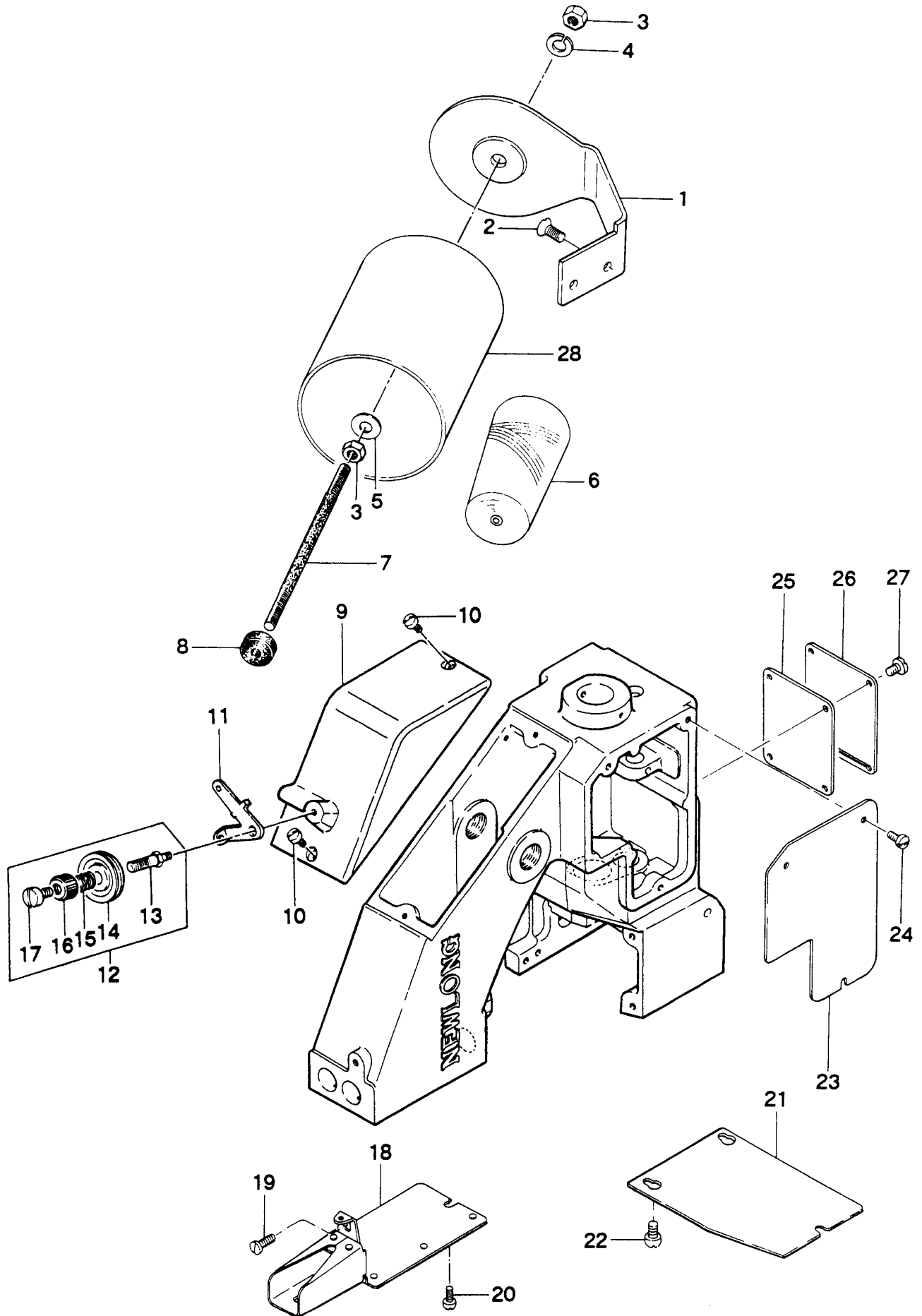
The parts list showing all the parts used in the machine is included in this book. Check the list, and specify parts numbers and quantities required clearly. Send your order to the nearest agent, distributor or one of our branch offices.

1. Description of each part and its stamp number is described in this parts list.  
Screws and nuts for parts are shown adjacent to the relevant parts. When ordering parts, describe clearly stamp number with its name of part.
  2. The parts which have no Ref. Number can not be delivered independently; always order it as an assembly.
  3. A set of assembled parts is represented by the stamp number of its main parts.
  4. The last figure on the parts stamp number advances on each improvement of the parts.
  5. Parts No. described in [ ] of Remarks means old parts No.
- \* The parts list is subject to change without prior notice.

## CONTENTS

(1)	THREAD TENSION AND COVER PARTS.....	10
(2)	BUSHING, OILING AND HANDLE PARTS .....	12
(3)	NEEDLE BAR, PRESSER BAR AND DRIVING PARTS .....	14
(4)	LOOPER DRIVING PARTS.....	16
(5)	FEED DRIVING AND THREAD CUTTER PARTS.....	18
(6)	MOTOR PARTS (For Totally Enclosed Type Motor) .....	20
(7)	SPECIAL PARTS FOR NP-7H TYPE .....	22
(8)	CREPE TAPE BINDING AND CUTTER PARTS (Special Order Parts) .....	24
	NUMERICAL INDEX OF PARTS.....	26
	DIAGRAM OF SCREW, NUT & WASHER.....	28

# (1) THREAD TENSION AND COVER PARTS



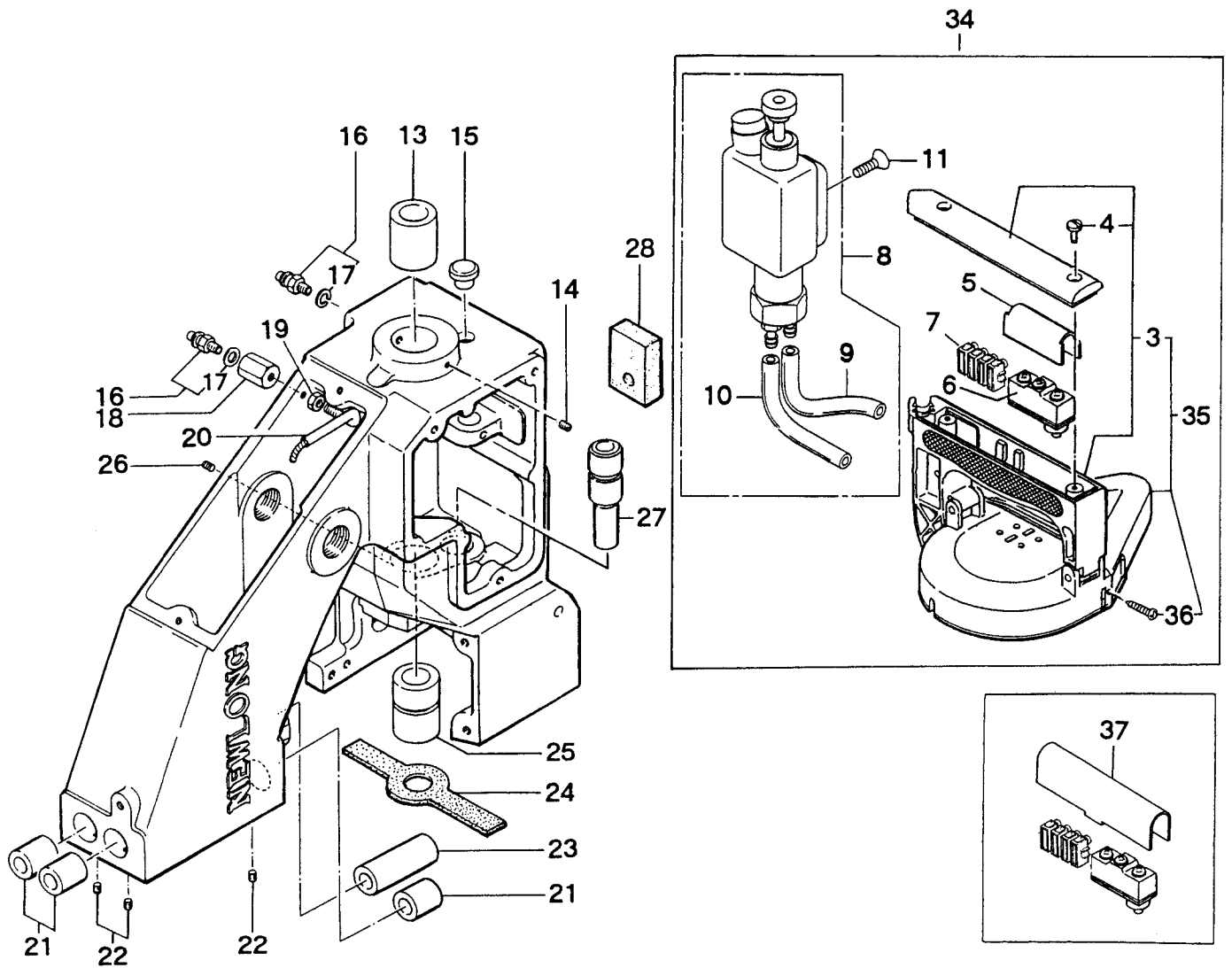
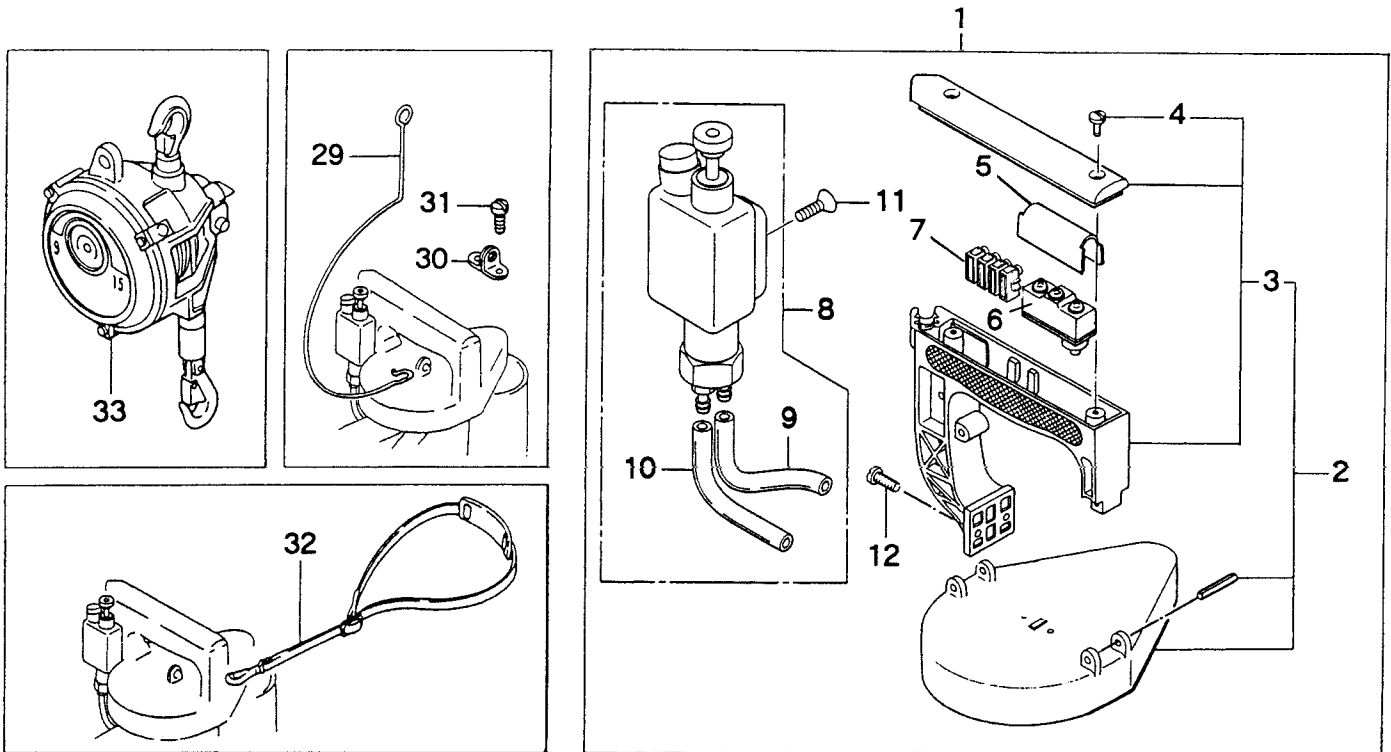
# (1) THREAD TENSION AND COVER PARTS

Ref. No.	Part No.	Description	Q'ty	Remarks
1	245042	Thread Stand	1	
2	15/64S28028	Screw,for 245042	2	
3	1N6	Nut	2	
4	3W6	Spring Washer	1	
5	2W6	Washer	1	
6	K01001	Thread	1	
7	245052	Thread Cone Clamping Rod	1	
8	245201	Thread Cone Clamping Nut	1	
9	245014	Top Cover	1	
10	9/64S40005	Screw, for 245014	2	
11	245551	Thread Eyelet	1	
12	<b>245081C</b>	<b>Thread Tension Assembly</b>	<b>1</b>	<b>(13~17)</b>
13	245081	Tension Post	1	
14	065261	Tension Disc	2	
15	245101	Tension Spring	1	
16	245092	Tension Nut	1	
17	9/64S40005	Screw, for 245081C	1	
18	245033	Needle Bar Guard	1	
19	11/64S40005	Screw, for 245033	1	
20	9/64S40065	Screw, for 245033	2	
21	245222	Looper Cover	1	
22	9/64S40065	Screw, for 245222	3	
23	245022	Side Plate	1	
24	9/64S40005	Screw, for 245022	3	
25	245481	Gasket	1	
26	245302	Inside Cover	1	
27	9/64S40005	Screw, for 245302	4	
28	245181	Thread Cone Cover	(1)	Special Oder

The Don Marshall Company, Inc.  
 235 Maple St. - P.O. Box124  
 Plain City, OH 43064-0124  
 (614) 873 8520

OUR TOLL FREE NUMBER IS  
 800-776-2391

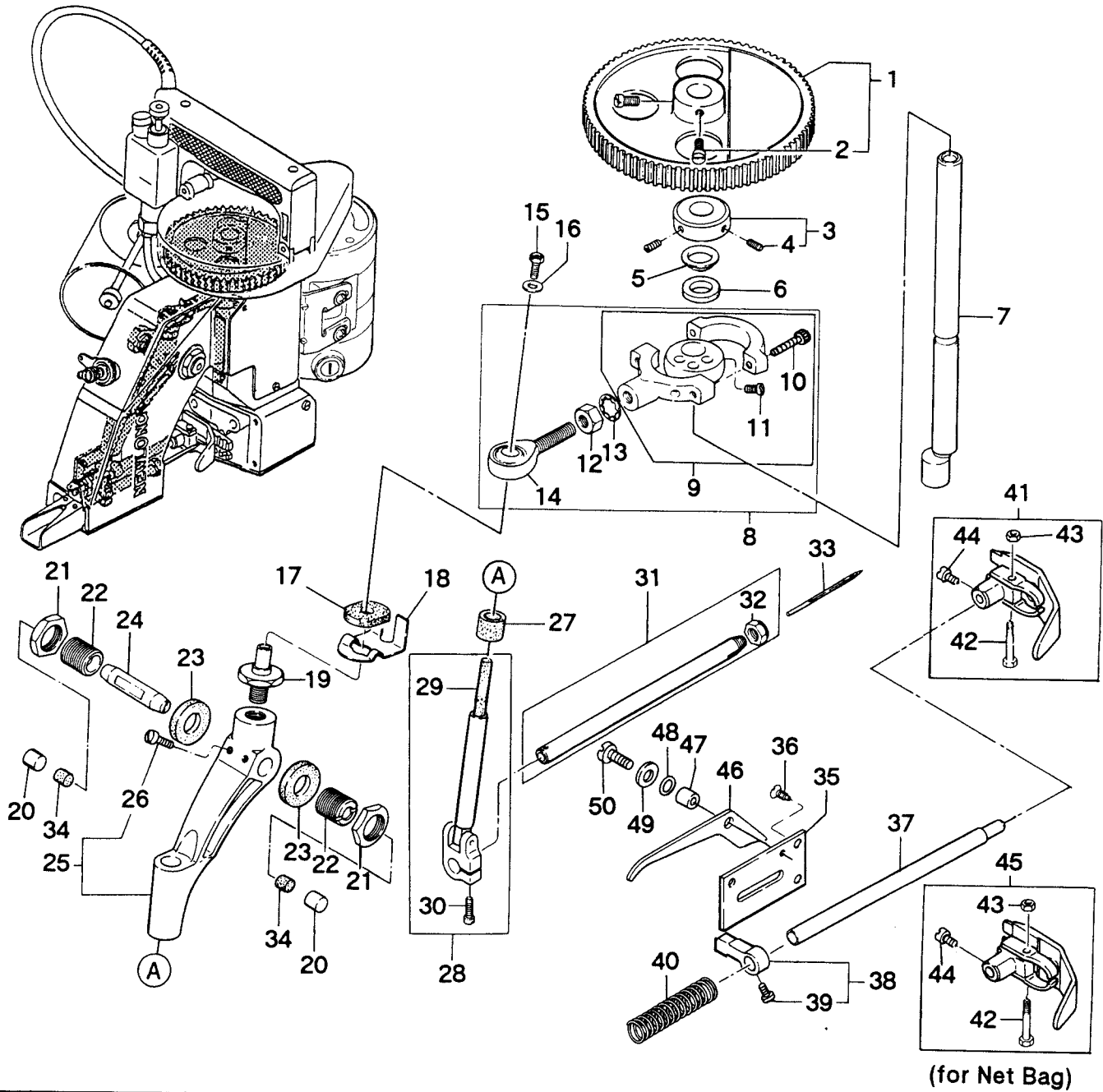
## (2) BUSHING, OILING AND HANDLE PARTS



## (2) BUSHING, OILING AND HANDLE PARTS

Ref. No.	Part No.	Description	Q'ty	Remarks
1	241024AS	Handle Assembly	1	2,5~11
2	241024A	Handle Assembly	1	(3,4)
3	241024	Handle	1	(4)
4	9/64S40011	Screw, for 241024A	2	
5	245132	Micro Switch Cover	1	
6	C02001	Micro Switch (Z-15GK655-B)	1	
	C02006	Micro Switch (X-10GD-B)	1	for DC motor
7	C05008	Flexible Terminal Block (ML-SK-1,4P)	1	
8	D03003	Oiler	1	(9,10)
9	8FU2-6x90F	Oil Tube, with oil felt	1	
10	8FU2-6x60F	Oil Tube, with oil felt	1	
11	6S5x15	Screw, for D03003	1	
12	15/64S28021	Screw, for 241024A	2	
13	241122	Main Shaft Bushing, rear	1	
14	9/64S40502	Screw, for 241122	1	
15	065401	Rubber Bushing	1	
16	D07021	Joint (BN-5-6)	2	(17)
17	E03014	Washer	2	
18	245471	Joint	1	
19	1N4	Nut	1	
20	245461	Oil Pipe	1	
21	242212	Bushing for Presser Bar & Needle Bar, upper	3	
22	9/64S40504	Screw, for 242212	3	
23	242222	Presser Bar Bushing, lower	1	
24	245541	Oil Felt	1	
25	241111	Main Shaft Bushing, lower	1	
26	9/64S40502	Screw, for 241111	1	
27	243021	Looper Rocker Shaft Bushing	1	
28	245162	Oil Felt	1	
29	245271	Hanger	(1)	Special Order
30	241151	Hook	(1)	
31	1/8S40006	Screw, for 241151	(2)	
32	245171	Shoulder Belt	(1)	
33	MW-6.5	Spring Balancer	(1)	
34	241024BS	Handle Assembly (Safety type with pulley cover)	(1)	5~11,35
35	241024B	Handle Assembly (Safety type with pulley cover)	(1)	(3,4,36)
36	9S2.6x10	Screw, for 241024B	(1)	for Canada
37	245133	Micro Switch Cover	(1)	

### (3) NEEDLE BAR, PRESSER BAR AND DRIVING PARTS



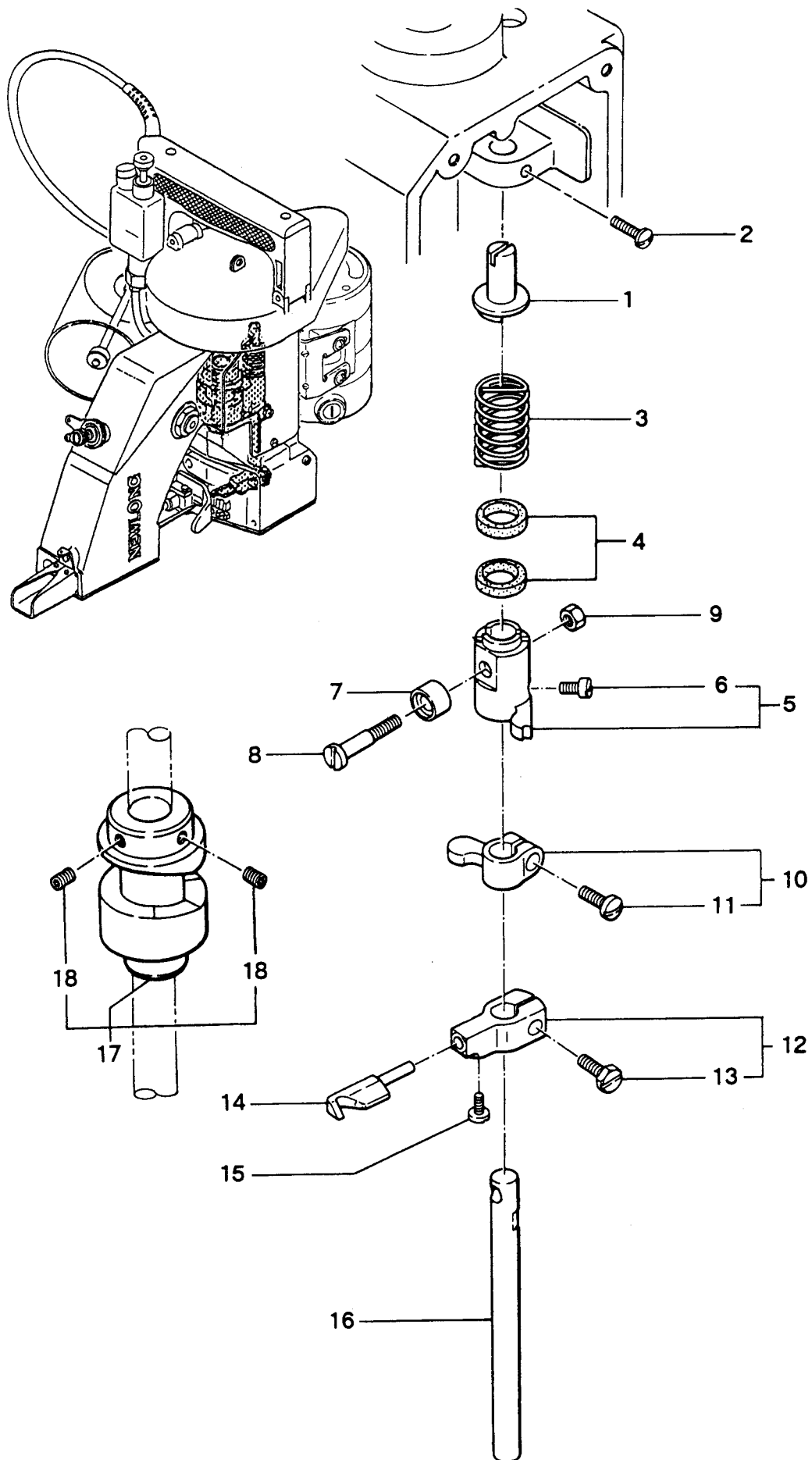
Ref. No.	Part No.	Description	Q'ty	Remarks
1	241092	Synchro Pulley	1	(2)
2	3/16S28001	Screw, for 241092	2	
3	241131	Retaining Collar	1	(4)
4	11/64S40502	Screw, for 241131	2	
5	241161	Spacer	1	
6	205131	Oil Felt	1	
7	241102	Main Shaft	1	
8	242011A	Connecting Rod Assembly	1	
9	242011	Connecting Rod Sub-Assembly	1	(9~14)
10	4B5×15	Screw, for connecting rod cap	2	(10,11)
11	11/64S40001	Screw, for eccentric cam	2	
12	1N8	Nut, for 242011A	1	

### (3) NEEDLE BAR,PRESSER BAR AND DRIVING PARTS

Ref. No.	Part No.	Description	Q'ty	Remarks
13	5W8	Washer, for 242011A	1	
14	6A04001	Rod End (POS-8)	1	
15	11/64S40084	Screw, for 242031	1	
16	11/64W15103	Washer, for 242031	1	
17	245211	Oil Felt	1	
18	242041	Spring	1	
19	242031	Rod End Stud	1	
20	245491	Cap	2	
21	5/8N18101	Nut , for 242081	2	
22	242081	Adjusting Stud	2	
23	245231	Oil Felt	2	
24	242071	Needle Bar Lever Stud	1	
25	<b>242051A</b>	<b>Needle Bar Lever Assembly</b>	<b>1</b>	(26)
26	11/64S40004	Screw, for 242051A	2	
27	245371	Oil Felt	1	
28	<b>242101A</b>	<b>Needle Bar Connection Assembly</b>	<b>1</b>	(29,30)
29	205171	Oil Felt	1	
30	11/64S40003	Screw, for 242101A	1	
31	<b>242121A</b>	<b>Needle Bar with Nut</b>	<b>1</b>	(32)
32	242131	Needle Clamp Nut	1	
33	B01002	Needle(DN×1 #25)	1	
34	065561	Oil Felt	2	
35	242172	Presser Foot Lifter Base	1	
36	11/64S40002	Screw, for 242172	3	
37	242201	Presser Bar	1	
38	<b>242181</b>	<b>Presser Bar Connection</b>	<b>1</b>	(39)
39	11/64S40003	Screw, for 242181	1	
40	242191	Presser Spring	1	
41	<b>242231A</b>	<b>Presser Foot Assembly</b>	<b>1</b>	(42~44)
42	9/64S40055	Screw	1	
43	9/64N40101	Nut	1	
44	11/64S40005	Screw, for 242231A, 242233A	1	
45	<b>242233A</b>	<b>Presser Foot Assembly (for Net Bag)</b>	<b>(1)</b>	(42~44)
46	242161	Presser Foot Lifter	(1)	Special Order For Presser Bar Lifter
47	242271	Collar	(1)	
48	31LP6	"O" Ring	(1)	
49	11/64W15103	Washer	(1)	
50	11/64S40009	Screw, for 242161	(1)	



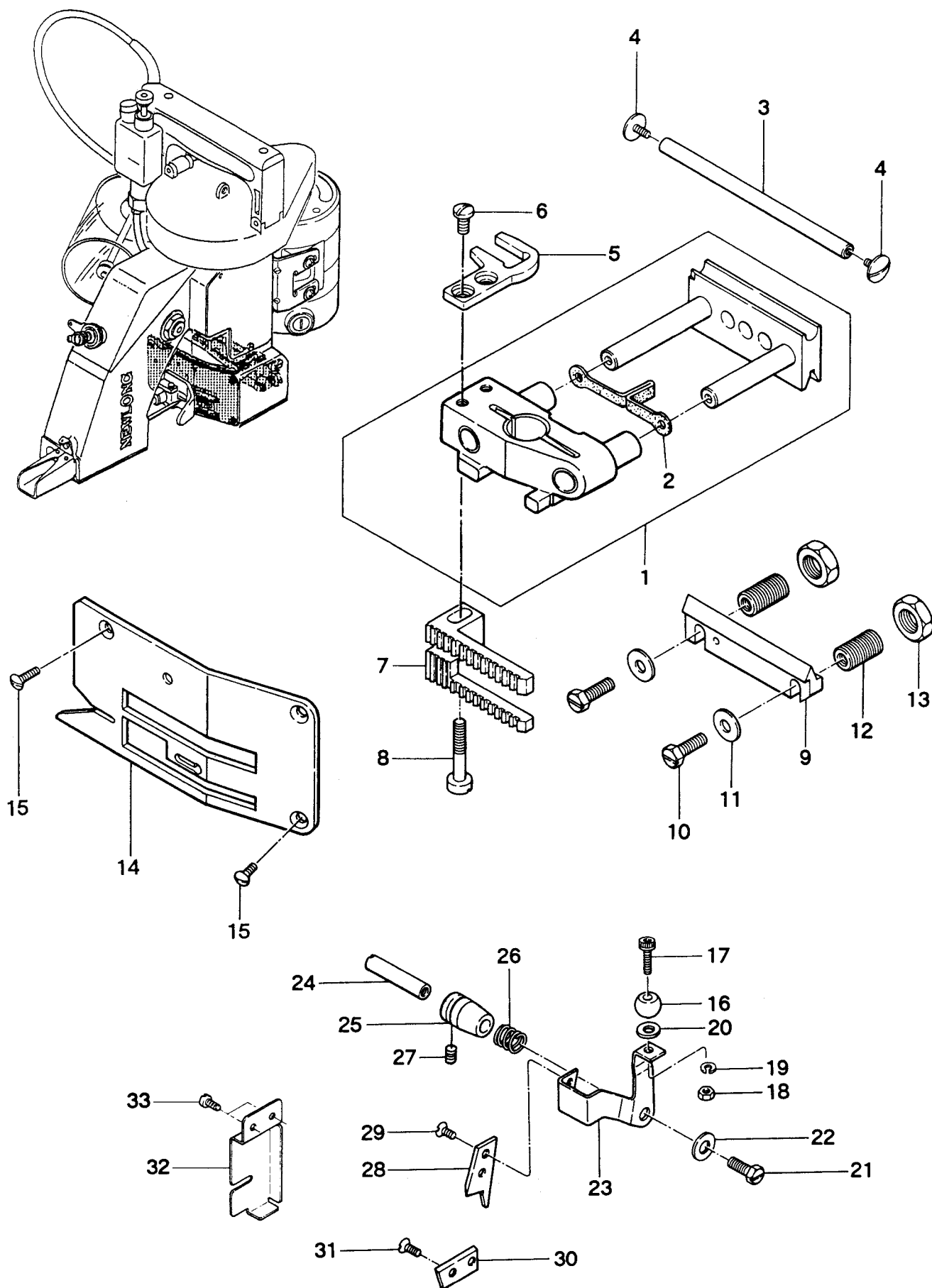
#### (4) LOOPER DRIVING PARTS



#### (4) LOOPER DRIVING PARTS

Ref. No.	Part No.	Description	Q'ty	Remarks
1	243121	Spring Supporter	1	
2	11/64S40003	Screw, for 243121	1	
3	243131	Spring	1	
4	205131	Oil Felt	2	
5	<b>243071</b>	<b>Looper Rocker Shaft Arm (A)</b>	<b>1</b>	<b>(6)</b>
6	11/64S40002	Screw, for 243071	1	
7	243041	Roller	1	
8	243061	Roller Stud Screw	1	
9	11/64N40201	Nut, for 243061	1	
10	<b>243081</b>	<b>Looper Rocker Shaft Arm (B)</b>	<b>1</b>	<b>(11)</b>
11	11/64S40009	Screw, for 243081	1	
12	<b>243092</b>	<b>Looper Rocker</b>	<b>1</b>	<b>(13)</b>
13	11/64S40089	Screw, for 243092	1	
14	243102	Looper	1	
15	9/64S40001	Screw, for 243102	1	
16	243032	Looper Rocker Shaft	1	
17	<b>243012</b>	<b>Looper Drive Cam</b>	<b>1</b>	<b>(18)</b>
18	15/64S28524	Screw, for 243012	2	

# (5) FEED DRIVING AND THREAD CUTTER PARTS



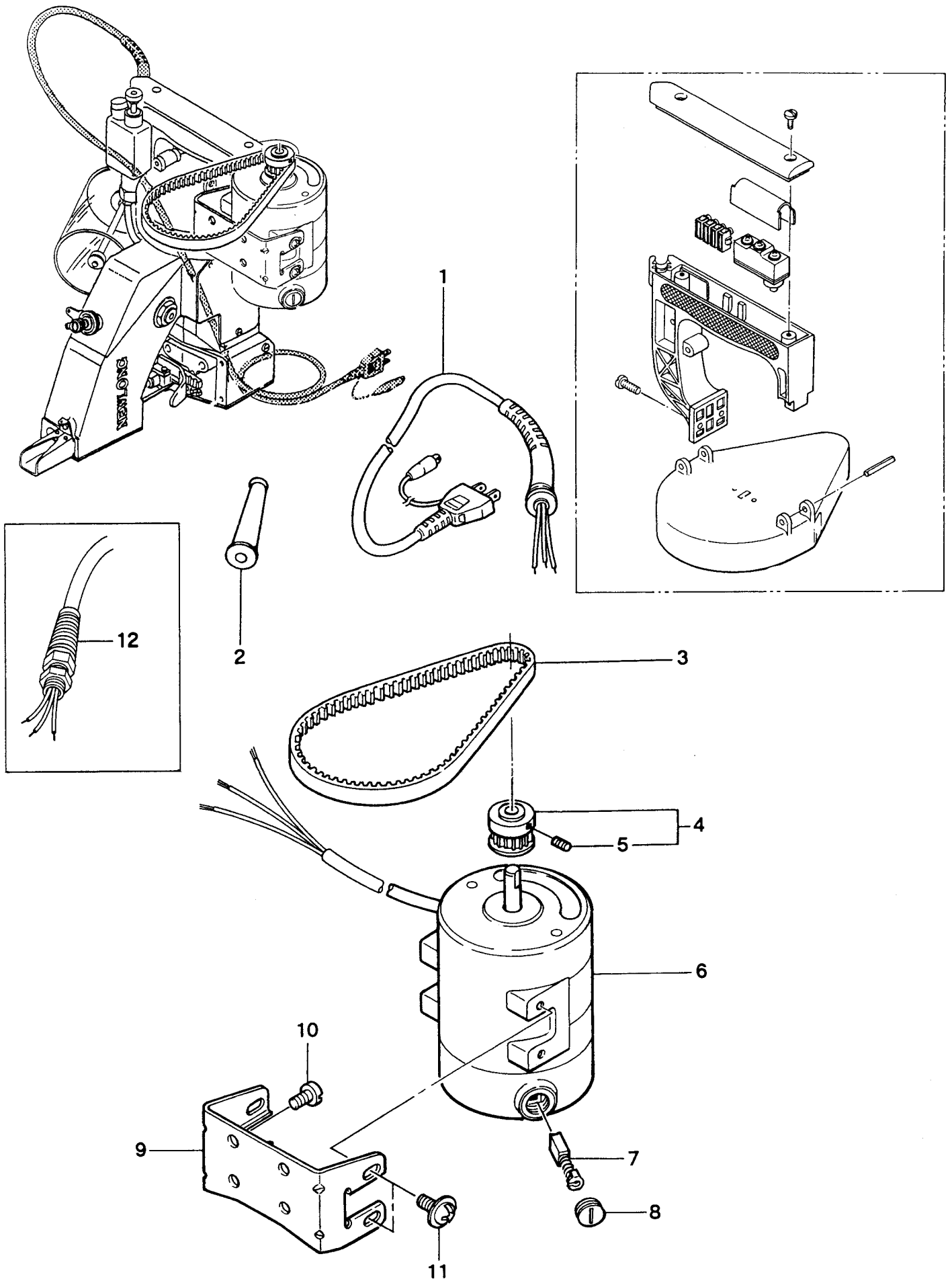
**(5) FEED DRIVING AND THREAD CUTTER PARTS**

Ref. No.	Part No.	Description	Q'ty	Remarks
1	244011A	Feed Dog Carrier Block Assembly	1	(2)
2	245391	Oil Felt	1	
3	244102	Slide Block Guide Stud	1	
4	9/64S40011	Screw, for 244102	2	
5	246011	Knife Bracket Extension	1	
6	3/16S32031	Screw, for 246011	2	
7	244111	Feed Dog	1	
8	3/16S32034	Screw, for 244111	1	
9	244081	Slide Block Adjusting	1	
10	3/16S32025	Lock Bolt, for 244091	2	
11	11/64W15103	Washer, for 244091	2	
12	244091	Stud Slide Block Adjusting Support	2	
13	3/8N24201	Lock Nut, for 244091	2	
14	244122	Throat Plate	1	
15	9/64S40043	Screw, for 244122	3	
16	246081	Ball	1	
17	4B3×12	Bolt, for 246081(M3×0.5×12 ℓ)	1	
18	1N3	Nut, for 246081(M3×0.5)	1	
19	3W3	Spring Lock Washer(M3)	1	
20	1W3	Washer, for 246081(M3)	1	
21	11/64S40049	Screw, for 246021	1	
22	11/64W15103	Washer, for 246021	1	
23	246021	Knife Bracket	1	
24	246032	Knife Bracket Pin	1	
25	246042	Bushing, for 246032	1	
26	246051	Knife Tension Spring	1	
27	9/64S40502	Screw, for 246042	1	
28	246061	Knife Moving	1	
29	1/8S40003	Screw, for 246061	2	
30	246071	Knife Stationary	1	
31	1/8S40003	Screw, for 246071	2	
32	245561	Knife Cover	1	
33	1/8S40006	Screw, for 245561	2	<input type="checkbox"/> Special Order

The Don Marshall Company, Inc.  
 235 Maple St. - P.O. Box124  
 Plain City, OH 43064-0124  
 (614) 873-8520

OUR TOLL FREE NUMBER IS  
 800-776-2391

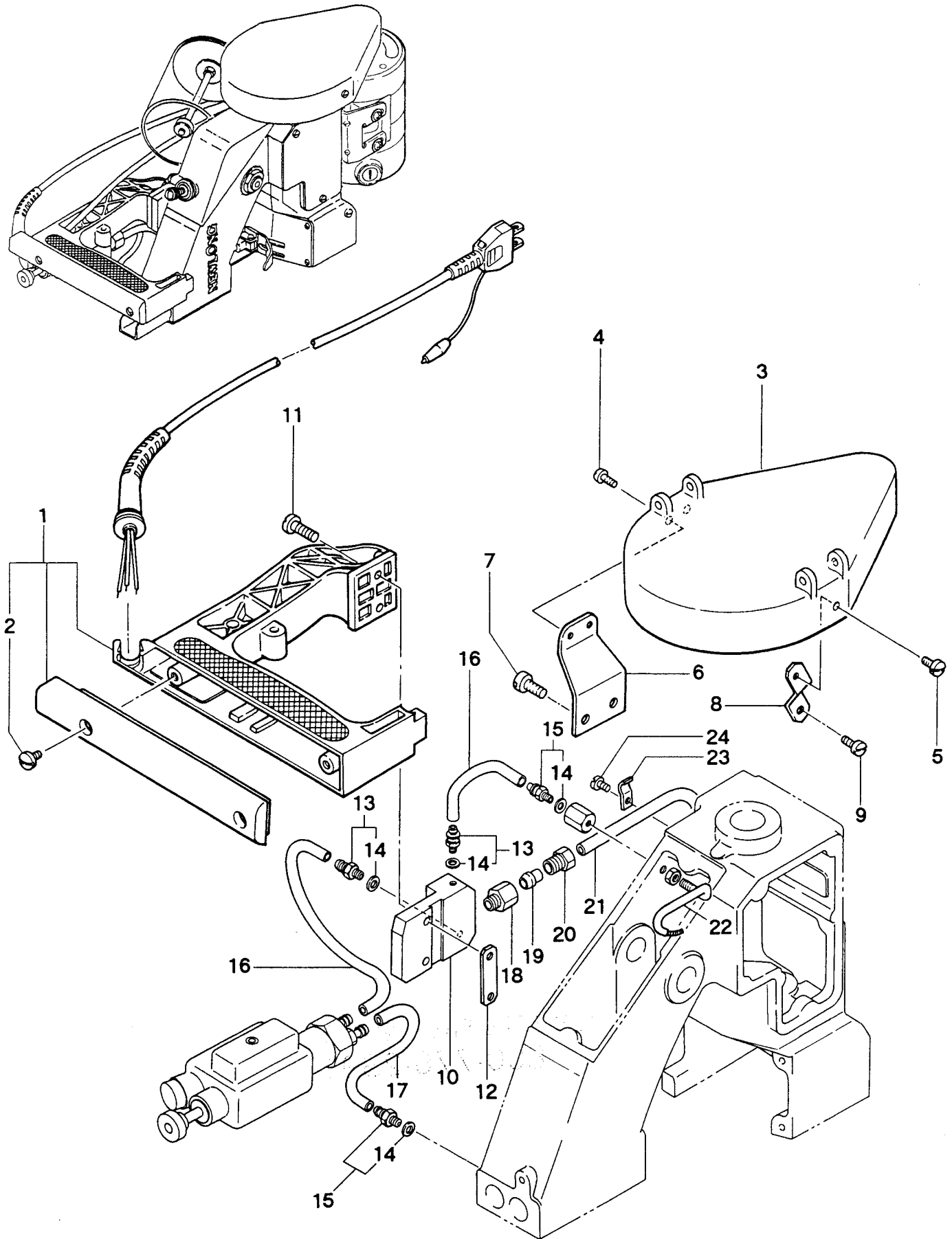
(6) MOTOR PARTS (For Totally Enclosed Type Motor)



## (6) MOTOR PARTS (For Totally Enclosed Type Motor)

Ref. No.	Part No.	Description	Q'ty	Remarks
1	C04001	Cabtyer Cord, with Plug(Standard Type)	1	
	C04003	Cabtyer Cord, with Plug(American Type)	1	
	C04004	Cabtyer Cord, with Plug(British Type)	1	
	C04005	Cabtyer Cord, with Plug(German Type)	1	
	C04006	Cabtyer Cord, with Plug(French Type)	1	
	C04007	Cabtyer Cord, with Plug(Australian Type)	1	
	C04009	Cabtyer Cord, with Plug(for DC Motor )	1	
2	211151	Rubber Bushing (for C04003-C04007)	(1)	
3	F01001	Timing Belt	1	
4	241083	Motor Pulley	1	(5)
5	11/64S40504	Screw, for 241083	2	
6	C01035	Universal Motor(220V) NSM-2	1	(7,8)
	C01036	Universal Motor(230V~240V) NSM-1	1	(7,8)
	C01037	Universal Motor(110V~120V) NSM-3	1	(7,8)
	C01032	motor(DC.24V)	(1)	Special Order
	C01033	motor(DC.12V)	(1)	〃
	C01034	Air power	(1)	〃
7	C08008	Carbon Brush, for AC Motor	2	
8	C07004	Cap	2	
9	241075	Motor Base	1	
10	15/64S28004	Screw, for 241075	4	
11	13S5×10	Screw, for Motor	4	
12	C06004	Cable Clamp (SKIN TOP BS-9)	(1)	for Canada

(7) SPECIAL PARTS FOR NP-7H



**(7) SPECIAL PARTS FOR NP-7H**

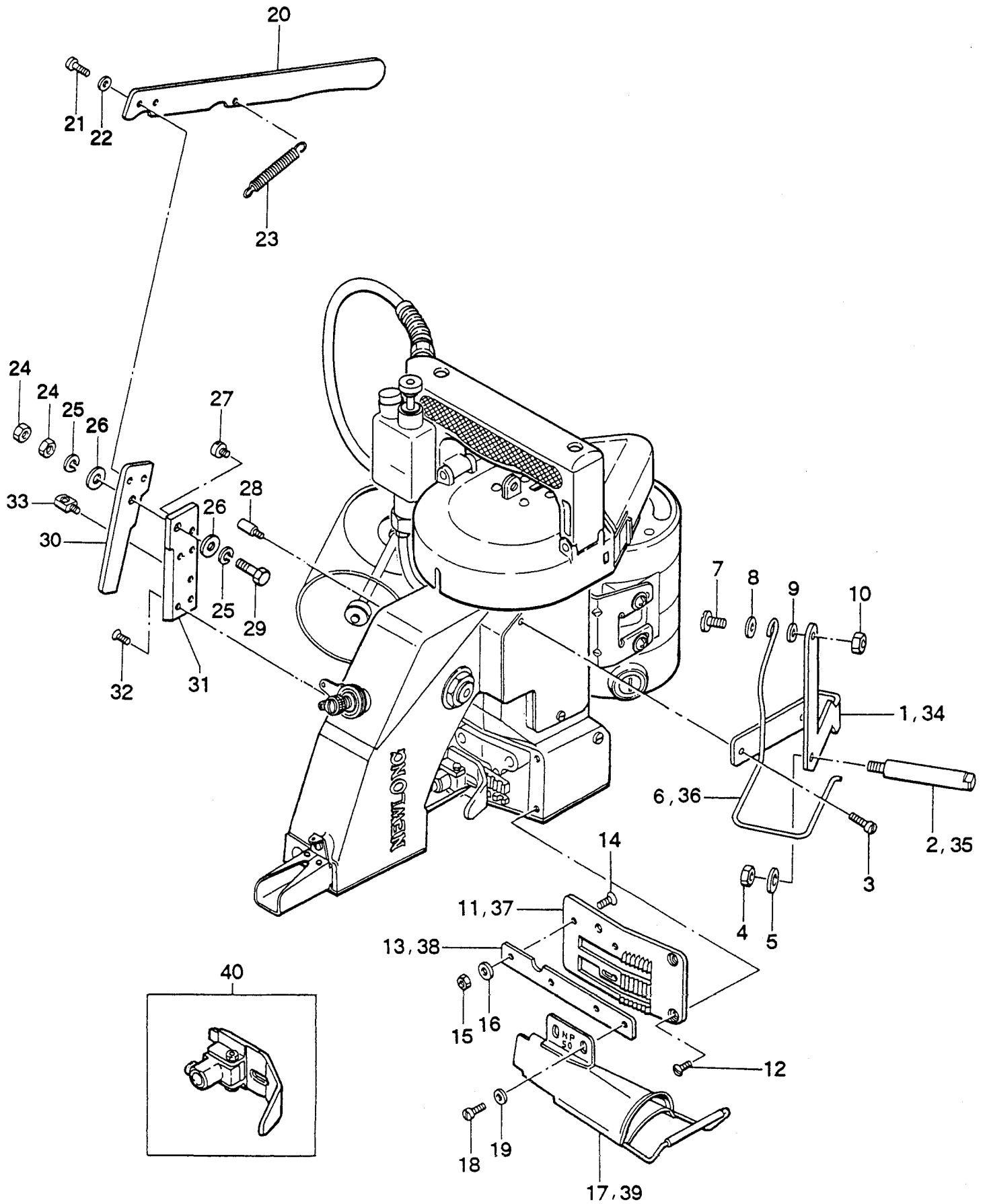
Ref. No.	Part No.	Description	Q'ty	Remarks	
1	241024	Handle	1	(2)	
2	9/64S40011	Screw	2		
3	241212	Pulley Cover	1		
4	9/64S40004	Screw, for 241053	2		
5	9/64S40052	Screw, for 241053	1		
6	241242	Pulley Cover Holder A	1		
7	15/64S28004	Screw, for 241242	2		
8	241231	Pulley Cover Holder B	1		
9	9/64S40005	Screw, for 241231	1		
10	241223	Handle Base	1		
11	15/64S28032	Screw, for 241253	2		
12	241253	Handle Base Holder	1		
13	D07021	Joint(BN-5-6)	2		(14)
14	E03014	Washer	4		(14)
15	D07021	Joint(BN-5-6)	2		
16	8FU2-6x95F	Oil Tube ( $\phi$ 6x95 $\ell$ ), with oil felt	2		
17	8FU2-6x70F	Oil Tube ( $\phi$ 6x70 $\ell$ ), with oil felt	1		
18	D07022	Joint	1		
19	D07023	Compression Sleeve	1		
20	D07024	Compression Bushing	1		
21	8FN2-4x135K	Oil Tube ( $\phi$ 4x135 $\ell$ ), with oil wick	1		
22	245462	Oil Pipe	1		
23	D07009	Tube Clip (PC-4-1)	1		
24	9/64S40005	Screw, for D07009	1		

**The Don Marshall Company, Inc.**  
**235 Maple St. - P.O. Box124**  
**Plain City, OH 43064-0124**  
**(614) 873-8520**

**OUR TOLL FREE NUMBER IS**  
**800-776-2391**



(8) CREPE TAPE BINDING AND CUTTER PARTS (Special Order Parts)



**(8) CREPE TAPE BINDING AND CUTTER PARTS (Special Order Parts)**

Ref. No.	Part No.	Description	Q'ty	Remarks
1	247071	Crepe Tape Bracket	1	
2	247091	Crepe Tape Hanger Stud	1	
3	9/64S40035	Screw, for 247071	2	
4	1N6	Nut, for 247091 (M6)	1	
5	2W6	Washer, for 247091 (M6)	1	
6	247081	Crepe Tape Supporter	1	
7	11/64S40015	Screw, for 247071	1	
8	1/4W03205	Spring Washer, for 247071	1	
9	1/4W15105	Washer, for 247071	1	
10	11/64N40203	Nut, for 247071	1	
11	244132	Throat Plate	1	
12	9/64S40043	Screw, for 244132	3	
13	247051	Holder, for crepe tape binder	1	
14	9/64S40043	Screw, for 247051	2	
15	9/64N40101	Nut, for 247051	2	
16	2W4	Washer, for 247051(M4)	2	
17	247061	Crepe Tape binder	1	
18	9/64S40054	Screw, for 247061	2	
19	2W4	Washer, for 247061(M4)	2	
20	247031	Cutter Lever	1	
21	11/64S40046	Screw, for 247011	2	
22	11/64W10101	Washer, for 247011	2	
23	247041	Spring	1	
24	15/64N28206	Nut, for 247021	2	
25	3W6	Spring Lock Washer, for 247021,(M6)	2	
26	2W6	Washer, for 247021, (M6)	2	
27	11/64S40029	Stopper Screw, for 247011	1	
28	3/16S32026	Stopper Screw, for 247031	1	
29	247021	Hinge Pin	1	
30	247011	Knife, Moving	1	
31	247001	Knife, Stationary	1	
32	1/8S40003	Screw, for 247001	4	
33	183261	Spring Hook	1	
34	247073	Crepe Tape Bracket	(1)	for Crepe Tape width 70 mm
35	247092	Crepe Tape Hanger Stud	(1)	
36	247082	Crepe Tape Supporter	(1)	
37	244133	Throat Plate	(1)	
38	247052	Holder, for crepe tape binder	(1)	
39	247063	Crepe tape Binder	(1)	
40	242261A	Presser Foot Assembly	(1)	

## NUMERICAL INDEX OF PARTS

PART NO.	PAGE	PART NO.	PAGE	PART NO.	PAGE	PART NO.	PAGE
065261	11-14	242261A	25-40	245471	13-18	OTHER ITEMS	
065401	13-15	242271	15-47	245481	11-25		
065561	15-34	243012	17-17	245491	15-20		
183261	25-33	243021	13-27	245541	13-24	6A04001	15-14
205131	14-6,17-4	243032	17-16	245551	11-11	B01002	15-33
211151	21-2	243041	17-7	245561	19-32	C01032	21-6
205171	15-29	243061	17-8	246011	19-5	C01033	21-6
241024	13-3,23-1	243071	17-5	246021	19-23	C01034	21-6
241024A	13-2	243081	17-10	246032	19-24	C01035	21-6
241024AS	13-1	243092	17-12	246042	19-25	C01036	21-6
241024B	13-35	243102	17-14	246051	19-26	C01037	21-6
241024BS	13-34	243121	17-1	246061	19-28	C02001	21-6
241075	21-9	243131	17-3	246071	19-30	C02006	21-6
241083	21-4	244011A	19-1	246081	19-16	C04001	21-1
241092	14-1	244081	19-9	247001	25-31	C04003	21-1
241102	14-7	244091	19-12	247011	25-30	C04005	21-1
241111	13-25	244102	19-3	247021	25-29	C04006	21-1
241122	13-13	244111	19-7	247031	25-20	C04007	21-1
241131	14-3	244122	19-14	247041	25-23	C04009	21-1
241151	13-30	244132	25-11	247051	25-13	C05008	13-7
241161	14-5	244133	25-37	247052	25-38	C06004	21-12
241212	23-3	245014	11-9	247061	25-17	C07004	21-8
241223	23-10	245022	11-23	247063	25-39	C08008	21-7
241231	23-8	245033	11-18	247071	25-1	D03003	13-8
241242	23-6	245042	11-1	247073	25-34	D07009	23-23
241253	23-12	245052	11-7	247081	25-6	D07021	13-16,23-13
242011	14-9	245081C	11-12	247082	25-36		23-15
242011A	14-8	245081	11-13	247091	25-2	D07022	23-18
242031	15-19	245092	11-16	247092	25-35	D07023	23-19
242041	15-18	245101	11-15			D07024	23-20
242051A	15-25	245132	13-5			F01001	21-3
242071	15-24	245133	13-37			K01001	11-6
242081	15-22	245162	13-28			8FN2-4×135K	23-21
242101A	15-28	245171	13-32			8FU2-6×60F	13-10
242121A	15-31	245181	11-28			8FU2-6×70F	23-17
242131	15-32	245201	11-8			8FU2-6×90F	13-9
242161	15-46	245211	15-17			8FU2-6×95F	23-16
242172	15-35	245222	11-21			MW-6.5	13-33
242181	15-38	245231	15-23			31LP6	15-48
242191	15-40	245271	13-29				
242201	15-37	245302	11-26				
242212	13-21	245371	15-27				
242222	13-23	245391	19-2				
242231A	15-41	245461	13-20				
242233A	15-45	245462	23-22				

## NUMERICAL INDEX OF PARTS

PART NO.	PAGE	PART NO.	PAGE	PART NO.	PAGE	PART NO.	PAGE
<b>SCREW</b>		15/64S28526	17-18				
		4B3×12	19-17				
1/8S40003	19-29,19-31	4B5×15	14-10				
	25-32	6S5×15	13-11				
1/8S40006	13-31,19-33	9S2.6×10	13-36				
		<b>NUT</b>					
3/16S28001	14-2						
3/16S32025	19-10						
3/16S32026	25-28	1N3	19-18				
3/16S32031	19-6	1N4	13-19				
3/16S32034	19-8	1N6	11-3,25-4				
9/64S40001	17-15	1N8	14-12				
9/64S40004	23-4	3/8N24201	19-13				
9/64S40005	11-10,11-17	5/8N18101	15-21				
	11-24,11-27	9/64N40101	15-43,25-15				
	23-9	11/64N40201	17-9				
	23-24						
9/64S40011	13-4,19-4	11/64N40203	25-10				
	23-2	15/64N28206	25-24				
9/64S40035	25-3						
9/64S40043	19-15,25-12						
	25-14						
		<b>WASHER</b>					
9/64S40052	23-5						
9/64S40054	25-18	1W3	19-20				
9/64S40055	15-42	2W4	25-16,25-19				
9/64S40065	11-20,11-22	2W6	11-5,25-5				
9/64S40502	13-16,13-26		25-26				
	19-27						
9/64S40504	13-22	3W3	19-19				
11/64S40001	14-11	3W6	11-4,25-25				
11/64S40002	15-36,17-6	5W8	15-13				
11/64S40003	15-30,15-39	1/4W03205	25-8				
	17-2	1/4W15105	25-9				
11/64S40004	15-26	11/64W10101	25-22				
11/64S40005	11-19,15-44	11/64W15103	15-16,15-49				
11/64S40009	15-50,17-11		19-11,19-22				
11/64S40015	25-7	E03014	13-17,23-14				
11/64S40029	25-27						
11/64S40046	25-21						
11/64S40049	19-21						
11/64S40084	15-15						
11/64S40089	17-13						
11/64S40502	14-4						
11/64S40504	21-5						
15/64S28004	23-7,21-10						
15/64S28021	13-12						
15/64S28028	11-2						
15/64S28032	23-11						

**NP-7A**

# SCREW , NUT & WASHER

ネジ、ナット、ワッシャー

FULL SIZE (原寸)



9/64S40502



11/64S40502



11/64S40504



15/64S28524



1/8S40006



9/64S40001



9/64S40004



9/64S40052



9/64S40054



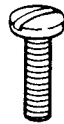
9/64S40011



9/64S40065



9/64S40005



9/64S40035



11/64S40029



11/64S40001



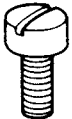
11/64S40002



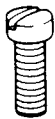
11/64S40009



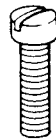
11/64S40006



11/64S40046



11/64S40003



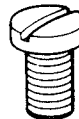
11/64S40004



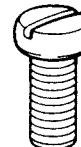
11/64S40005



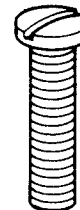
3/16S32031



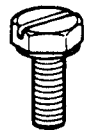
15/64S28004



15/64S28021



15/64S28032



11/64S40084



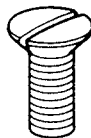
1/8S40003



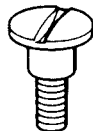
9/64S40043



11/64S40007



15/64S28028



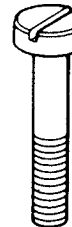
11/64S40015



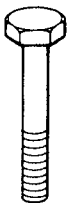
3/16S28001



3/16S32026



3/16S32034



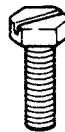
9/64S40055



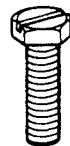
11/64S40049



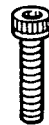
11/64S40075



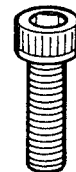
11/64S40089



3/16S32025



4B3x12



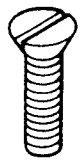
4B5x15



1S3/16-32x9



FC103238



6S5x15



9/64N40101



11/64N40201



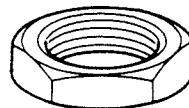
11/64N40203



15/64N28206



3/8N24201



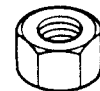
5/8N18101



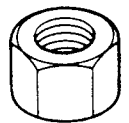
1N3



1N4



1N6



1N8



11/64N40102



11/64W10101



11/64W15103



1/4W03205



1/4W15105



1W3



2W4



2W6



3W6



5W8



E03014



**NEWLONG HOLLAND B.V.**

EUROPEAN OFFICE OF NEWLONG BRAND: BAG MACHINES, BAG SEWING/CLOSING MACHINES

Date: 11th of March, 1999

### The EC Declaration of Conformity

We declare that the following machine conforms to all the relevant provisions.

Name of the machine:

Model: NP-7A, Portable Bag Closer

Name and address of the authorized representative of the manufacturer established in the EC:-

Capronilaan 10, 1119NR Schiphol-Rijk, The Netherlands  
NEWLONG HOLLAND B.V.  
Toshiji Saraya – General Manager and Director

Outline of the machine: As attached

Relevant provisions complied with by the machine:-


Directive 89/392/EEC  
Directive 91/368/EEC (amendment to 89/392/EEC)  
Directive 73/23/EEC  
EN292/EEC  
EN60204/EEC  
EN294/EEC  
IEC34  
IEC664

Relevant national technical standards complied with by the machine:

JPMA Safety and Health Standards for Packaging and Packing Machinery - 1986

Yours faithfully,

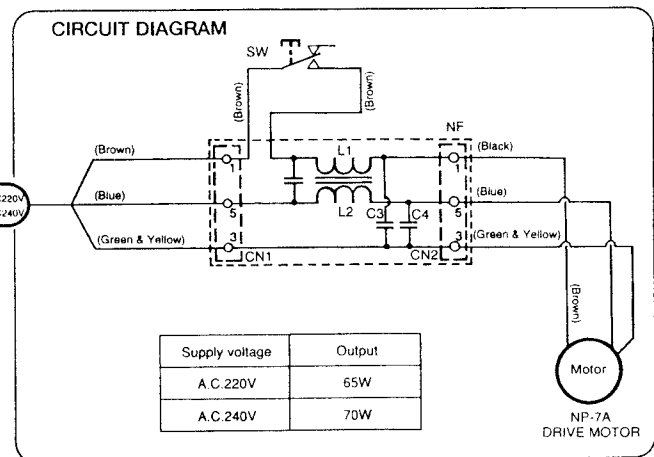
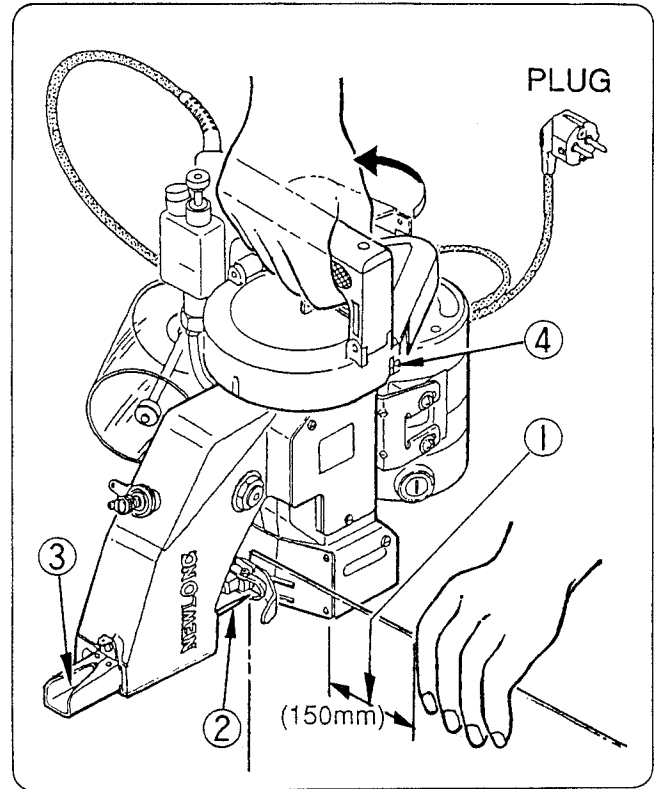
NEWLONG HOLLAND B.V.

  
Toshiji Saraya  
General Manager / Director

## Warning on Residual Risk!

The machine has operational hazardous areas as indicated below. Use particular care for these areas when operating the machine for closing bags, threading, or otherwise handling it for checking or maintenance. Observe the instructions below to protect the operator or any other person who may use or handle this machine from possible person injuries.

- ① The machine is designed to be used and controlled by the right, not the left, hand of an operator. Be sure to grip the handle by the right hand even when the operator is left-handed. Keep a clearance of at least 150mm between the hand of the operator holding the bag and the machine body. This is necessary to prevent the operator's hand from being caught by the machine in operation.
- ② The needle holder at the tip of the needle bar is not provided with a safety cover. Do not touch the needle and the needle holder when the machine is in operation. When threading or replacing the needle, jog the needle bar with the switch until it reaches a suitable position and then threading or replacing the needle.
- ③ An opening is provided on the needle bar guard to allow threading. Do not touch the guard when the machine is in operation. When threading the needle bar guard, always remove the power cable from power supply.
- ④ When turning the machine by hand for replacing parts or adjusting, always remove the power cable from power supply. Open the motor pulley cover by removing the stopper screw. The machine can be turned when the motor pulley is turned by hand. Be sure to close the cover and fix it with the stopper screw before starting the machine.
- ⑤ The Noise of this machine is 75 dB(A)~84dB(A).  
This Noise level is not an abnormal state of the machine.



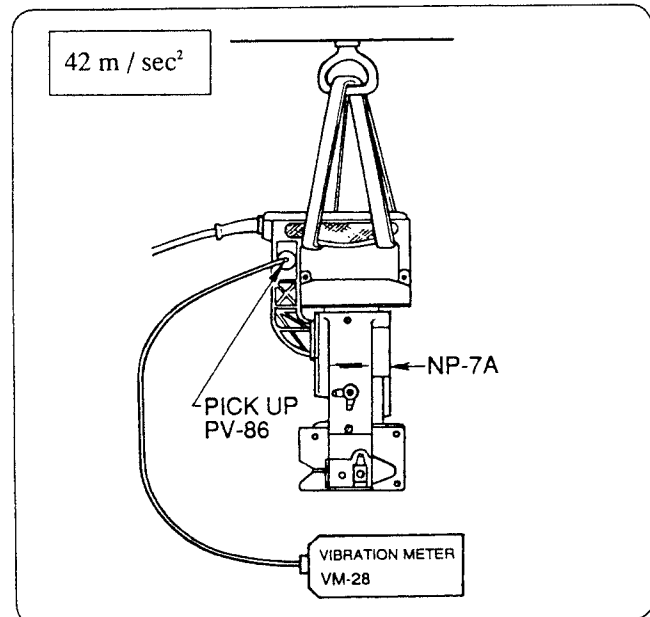
## Acceleration Value of Vibration

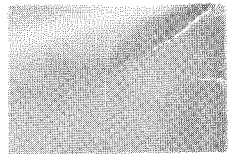
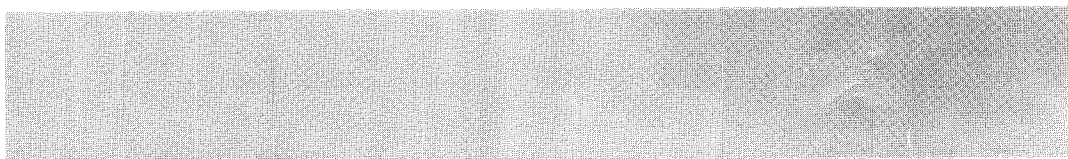
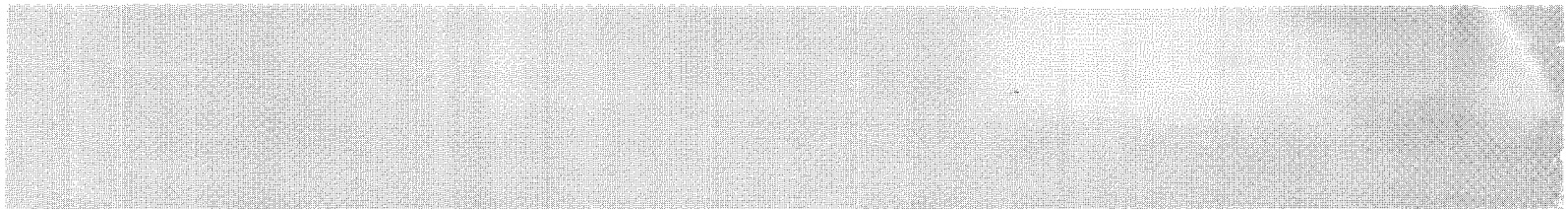
- ① Acceleration value of vibration (weighted root mean square acceleration value) at the handle is as indicated below.
- ② Method and Condition of Measurement
  - 1) The machine was suspended, on a leather belt at the handle grip as shown.
  - 2) The vibration pick-up (FV-86) was fixed on the flat part of the handle with an M5 screw.
  - 3) The machine was run without load with the presser foot (242233A) lifted and without threaded.
  - 4) The drive motor was a UM81-240 type with the following specifications:

Voltage : 240V  
Frequency : 50 Hz  
Machine speed : 1,537 rpm  
Room temperature : 20°C

### ③ Measuring Equipment

- 1) Vibration meter, type VM-28 Vibration pick-up, type PV-86 Manufacturer : Rion Co., Ltd., Tokyo, Japan
- 2) Portable AC voltmeter, type 2013-18, 150/300V Manufacturer : Yokogawa Electric Mfg. Co., Ltd., Tokyo, Japan
- 3) Digital stroboscope (revolution indicator), type DT-301 Manufacturer: Shimpo Industrial Co., Ltd., Kyoto, Japan





14-14 MATSUGAYA 1-CHOME, TAITO-KU TOKYO, JAPAN TEL:03(3843) 6548